

KHILUK PAINTS
SPOT ON...

**SINGLE PAINT FOR
MULTIPLE SURFACES.**



OUTSHINES... ANY PAINT... ANY SURFACE...

OVERVIEW



WELCOME TO THE KHILUK PAINTS, THE MARVELLOUS OF AUSTRALIAN ENGINEERING FORMULATION

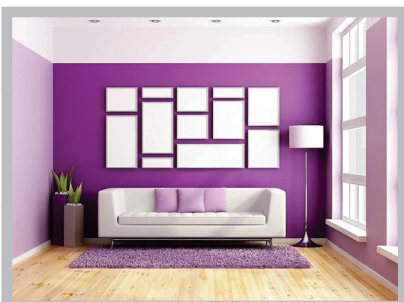


KHILUK PAINTS is dedicated to excellence in every aspect of its operations, from product quality to customer service. The emphasis on eco-friendliness and exceptional quality demonstrates a commitment to sustainability and customer satisfaction. Offering Client based solutions at competitive prices further positions the company as a leader in the surface coating industry, catering to the needs of both residential and commercial customers.

Its ease of effortless application and superior finish, which can be a compelling for every customer. We often make sure that reliability in meeting delivery schedules underscores our professionalism and dedication to customer service.

We cocoon the company's values of resilience and integrity with strong foundation and the trust it has earned from customers over time. Leveraging these strengths has helped us reinforce **KHILUK PAINTS** reputation as a trusted and respected brand in the industry.

KHILUK PAINTS is well-positioned to continue its success in providing innovative, high-quality, and eco-friendly paint solutions to customers globally.



WHY CHOOSE US?



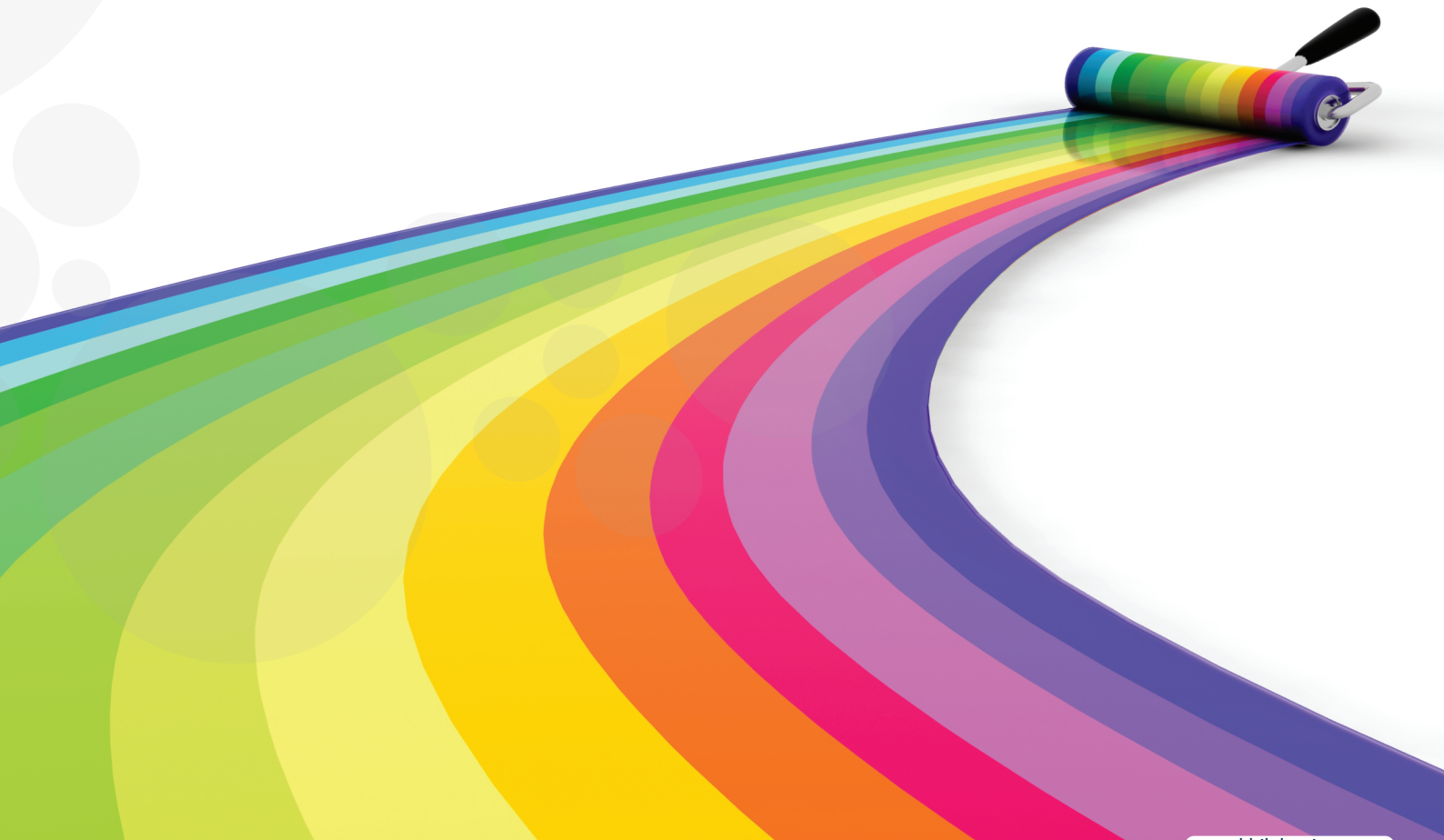
Unique Formula: We have created a paint formula that adheres well to various surfaces without compromising on quality or durability. This involves testing different combinations of ingredients to provide the optimal balance between adhesion, coverage, and resistance to wear and tear.

Versatility: Our paint can be applied to a wide range of surfaces commonly found in residential and commercial settings, such as wood, metal, plaster, concrete, and drywall. Offering a versatile solution that eliminates the need for multiple paint types can appeal to consumers looking for simplicity and efficiency.

Performance: Our paint delivers consistent performance across different surfaces, providing excellent coverage, color retention, and long-lasting durability. Its performance is validated under various conditions, including different climates and environmental factors.

Ease of Use: Our paint is easy to apply, whether using brushes, rollers, or sprayers, and provides clear instructions for preparation, application, and clean-up. By offering user-friendly products, we are enhancing customer satisfaction and encourage repeat purchases.

Marketing: It's easy to understand the benefits of using a single paint for multiple surfaces, emphasizing its convenience, cost-effectiveness, and superior performance compared to traditional paints. We can offer free product demonstrations, tutorials, and online content to showcase its capabilities and address any questions or concerns.



OUR PRODUCTS RANGE



KP Bond Clear Prime



KP Universal Primer



KP Ultra Metal Etch Primer



- Super Penetrating Primer/ under coat
- Highly Acrylic, Non Toxic, Odorless,
- Corrosion resistant, Chemical/ acid/alkaline resistant,
- Heat & Ultra Violet Resistant, Fungus resistant,

120-130 Sft./Ltr./ Coat  10, 20Ltr



ULTRA LUXURY RANGE



**KP Ultra Coat
Semi Gloss**



**KP Ultra Coat
Flat**



**KP Ultra Coat
Matt**



- Quick Drying Multiple Surface Coating
- Highly Acrylic, Non Toxic, Odorless,
- Corrosion resistant, Chemical/ acid/alkaline resistant,
- Heat & Ultra Violet Resistant, Fungus resistant,
- Colors Available

120-130
Sft./Ltr./ Coat



10, 20Ltr

CONTRACTOR RANGE



KP Premium Coat



KP Contractor Coat



KP Rental Coat



- Quick Drying Multiple Surface Coating
- Highly Acrylic, Non Toxic, Odorless,
- Corrosion resistant, Chemical/ acid/alkaline resistant,
- Heat & Ultra Violet Resistant, Fungus resistant,
- Colors Available

120-130
Sft./Ltr./ Coat



10, 20Ltr



WATER PROOFING



- Elastomeric Waterproofing UV Resistant coating
- Highly Acrylic, Non Toxic, Odorless,
- Corrosion resistant, Chemical/ acid/alkaline resistant,
- Heat & Ultra Violet Resistant, Fungus resistant,
- Colors Available

80-100
Sft./Ltr./ Coat



10, 20Ltr



FLOOR COATING



- Water Based Floor Coating
- Non Toxic, Odorless,
- Corrosion resistant, Chemical/ acid/alkaline resistant,
- Heat & Ultra Violet Resistant, Fungus resistant,
- Colors Available & Easy to Apply

40-60
Sft./Ltr./ Coat



10, 20Ltr



METAL COATING



- Water Based Corrosion & UV Resistant Metal Coating
- Non Toxic, Odorless,
- Chemical/ acid/alkaline resistant,
- Heat & Ultra Violet Resistant, Fungus resistant,
- Colors Available & Easy to Apply

80-100
Sft./Ltr./ Coat



10, 20Ltr

CLEAR COATING



- Water Based Corrosion & Clear Coat
- Non Toxic, Odorless,
- Will not yellow, crack or peel/ acid/alkaline resistant,
- Heat, fire and Chemical resistant,
- Easy to Apply

80-100
Sft./Ltr./ Coat



10, 20Ltr



PRODUCT BENEFITS






LOCATE US



INDIA | UAE | MALAYSIA | SINGAPORE | AUSTRALIA

MANUFACTURED AND MARKETED BY



 +91 911 353 2566
 info@khilukpaints.com
 www.khilukpaints.com

Regd Office :
Invicto Global Pvt. Ltd.
#18, 6th Cross, Balaji Layout
Kodigehalli Bengaluru - 560 094,
Karnataka INDIA.